

## **Notice of Study Commencement**

### **Municipal Class Environmental Assessment**

#### **The Study**

The Township of Wilmot has initiated a Class Environmental Assessment Study for the Baden Sanitary Trunk Main required in the settlement area of Baden. This sanitary trunk is proposed to accommodate current and future growth in the area. The study will determine the alignment and size of the trunk sewer to facilitate growth and optimize existing Township infrastructure in the area.

#### **The Process**

This project is being carried out in accordance with the requirements of the Environmental Assessment Act by following the Municipal Class EA document (as amended in 2007, 2011, 2015 and 2020) and it is being planned under Schedule 'B' of the Municipal Class Environmental Assessment (Class EA). This process is being integrated with the Planning Act for active development applications in Baden.

MTE Consultants will undertake the study, which involves an evaluation of alternatives, selection of preferred alternative, and evaluation of environmental impacts and their mitigation measures. At the end of the study, a conceptual design will be prepared by MTE Consultants.

#### **Comments Invited**

Public, Indigenous, and agency consultation is a key component of the Class EA process, and we value your input during the planning process. To help facilitate this input, a Public Information Centre where some of the alternative solutions will be presented is scheduled to take place later in the study. If you wish to be placed on the study mailing list to receive notices and information, or, if you wish to provide comments at any time during the Class EA process, you can do so by contacting:

#### **Dot Roga, C.E.T.**

##### **Project Manager**

MTE Consultants Inc.

Phone: (519) 743-6500 ext. 1269

Cell Phone: (519) 505-7507

Email: [droga@mte85.com](mailto:droga@mte85.com)

#### **Jeff Molenhuis, P. Eng**

##### **Director of Public Works & Engineering**

Township of Wilmot

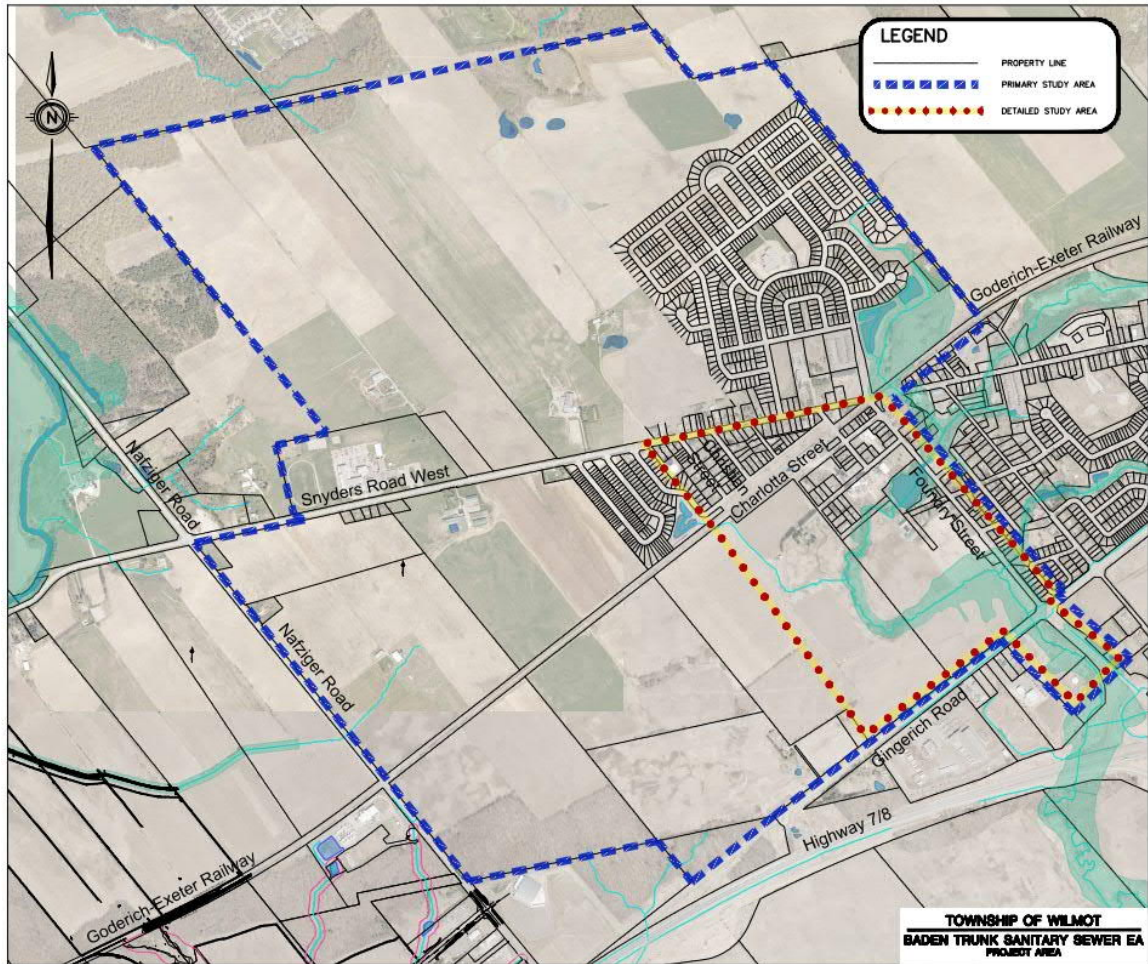
Phone: (519) 634-8444

Email: [jeff.molenhuis@wilmot.ca](mailto:jeff.molenhuis@wilmot.ca)

Please note that all correspondence will be kept on file for use during the decision-making process throughout the project and will become part of the public record. Under the Municipal Freedom of Information and Protection of Privacy Act and the Environmental Assessment Act, any personal information such as name, address, and telephone number included in a submission may become part of the public record unless otherwise requested in the submission.

**Figure 1.**

This figure illustrates the limits of the primary study area and the detailed study area.



This notice first published on June 17, 2021.