



CASTLE KILBRIDE

presents

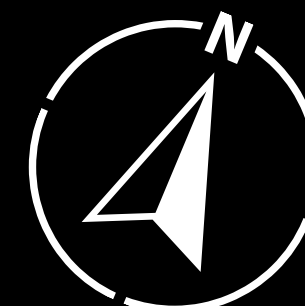
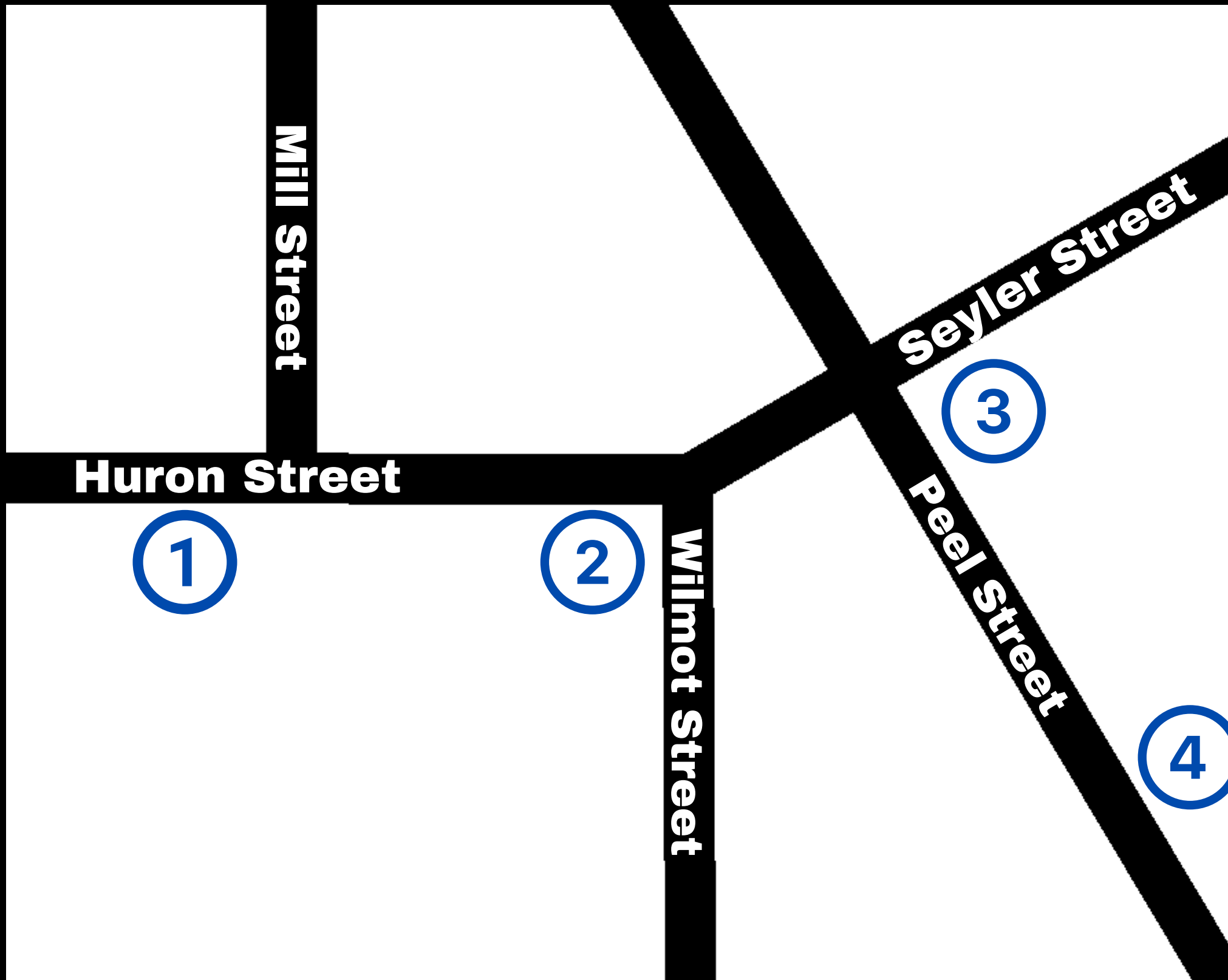
# Vintage Views of Wilmot New

# Hamburg

[www.castlekilbride.ca](http://www.castlekilbride.ca)









# 1. Ernst Block c.1910

ERNST'S BLOCK.

©Castle Kilbride Collection

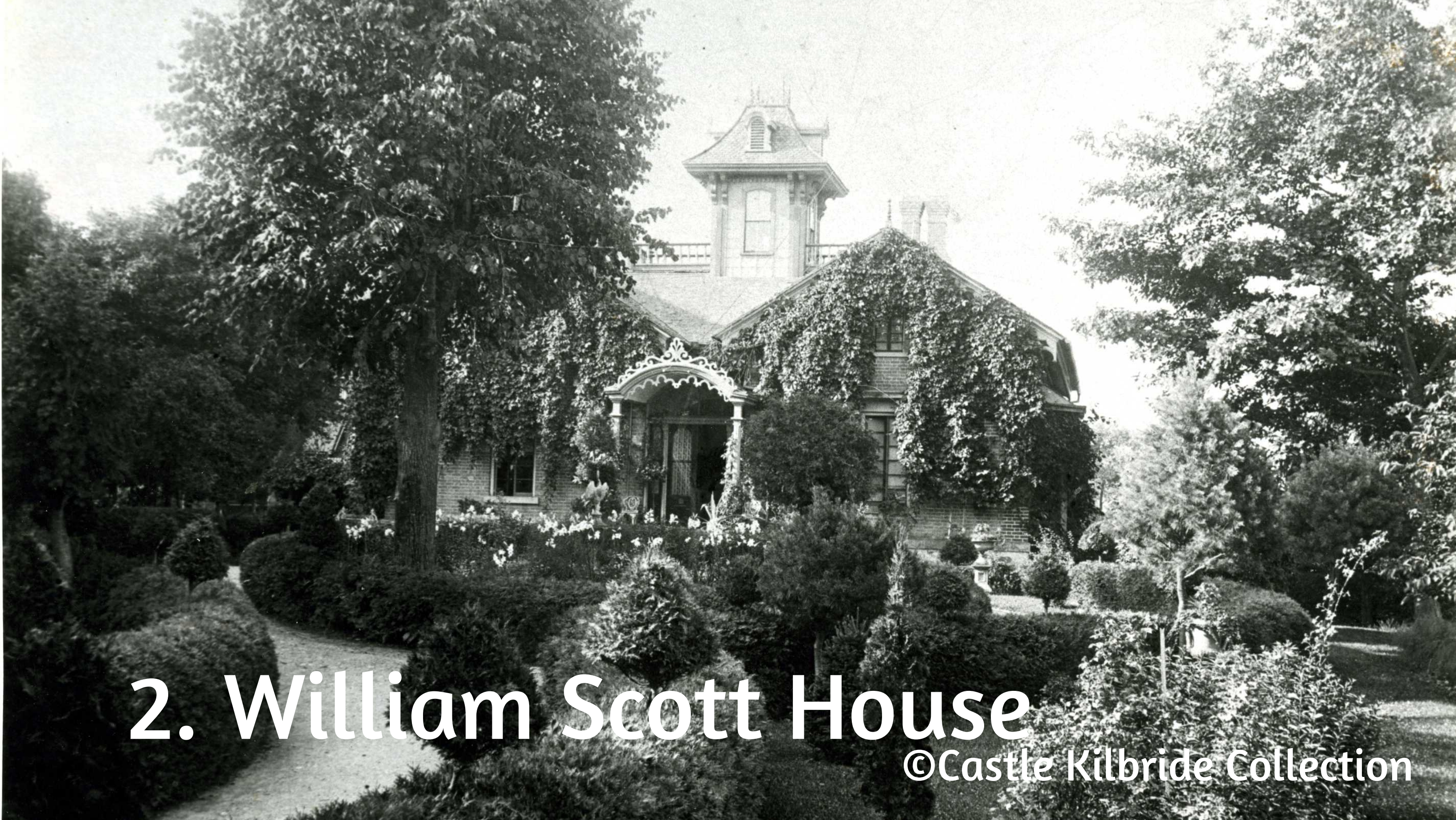
# 1. Ernst Block c.1910

65-67 Huron Street

This Edwardian Classicism building was constructed in 1910. It originally contained the Bell Telephone office and a millinery shop. The building was restored to reflect the original façade.

Today, seventy-five percent of the buildings located in the core have been identified as heritage buildings. This core was designated as a Heritage Conservation District in 1992 under the Ontario Heritage Act.





## 2. William Scott House

©Castle Kilbride Collection



## 2. William Scott House

17 Huron Street

This Gothic style home was built by William Scott about 1864. It was also home to Senator Samuel Merner. For many years it was home to the medical practices of Dr. Anderson and Dr. Kirkpatrick. In more recent years, it was best known as the Waterlot Restaurant. Designated by Heritage Wilmot in 1987 under Part IV of the Ontario Heritage Act.



# 3. Queen's Hotel c.1900





# 3. Queen's Hotel

73 Peel Street

This Italianate Ontario vernacular structure was built in 1884 and housed the Queen's Hotel. It was operated originally by the Ernst brothers, followed by the Franke family and then in 1896 to Christopher Kraus who opened the Baden Hotel. Kraus operated the hotel until 1916 when prohibition was introduced. Be sure to look for the grape motif keystones above the windows.



New Hamburg, Ont.



©Castle Kilbride Collection

## 4. Peel Street Looking North c.1910



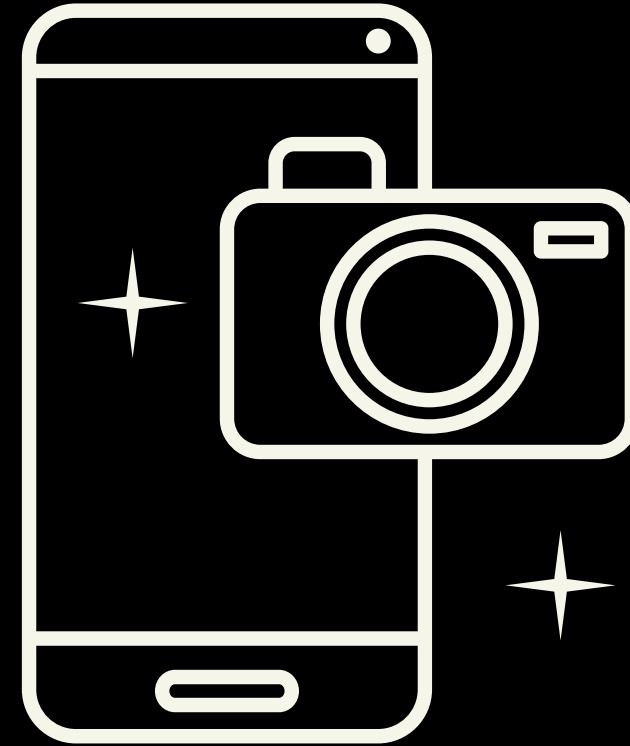
# 4. Peel Street Looking North c.1910

145 Peel Street

This idyllic view of Peel Street in the early 1900s, hasn't changed much over the last century. In the background you can see a gazebo centrally located to encourage residents to gather in the heart of the downtown. The large yellow building is the flour mill built in 1905. It replaced a frame building that was destroyed by fire in 1902.



# Vintage Views of Wilmot



Please take a current view or selfie from any of these four locations  
and upload to [Castle Kilbride | Facebook](#)