

# WILMOT TRAILS SCHMIDT WOODS

## SCHMIDT WOODS RULES



- Open only during daylight hours
- No ATV's, Dirt Bikes or other Motorized vehicles
- Snowmobiles only permitted in designated areas shown on map (when snowmobile trail open and with an OFSC trail permit)
- No Hunting or Target Shooting
- No Fires
- No Horses
- Stay on marked trails
- Dogs must be on leash

## KEEP ON TRACK

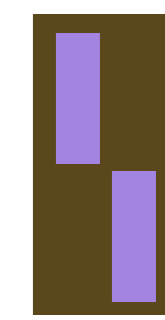
Please stay on the multi-use trail or marked hiking trail. Hiking trails are accessed off the multi-use trail and are marked by coloured blazes. The blazes are painted indicators, 5cm x 15cm rectangles. You will find the markings on trees and other noticeable features trail-side. Typically the blazes are on the right side as you travel along the path. A single blaze indicates the trail continues straight ahead. Double blazes indicate a directional change of the trail. On double blazes it is the upper marker that indicates the direction to follow.



Trail Continues Straight



Trail Turns Right



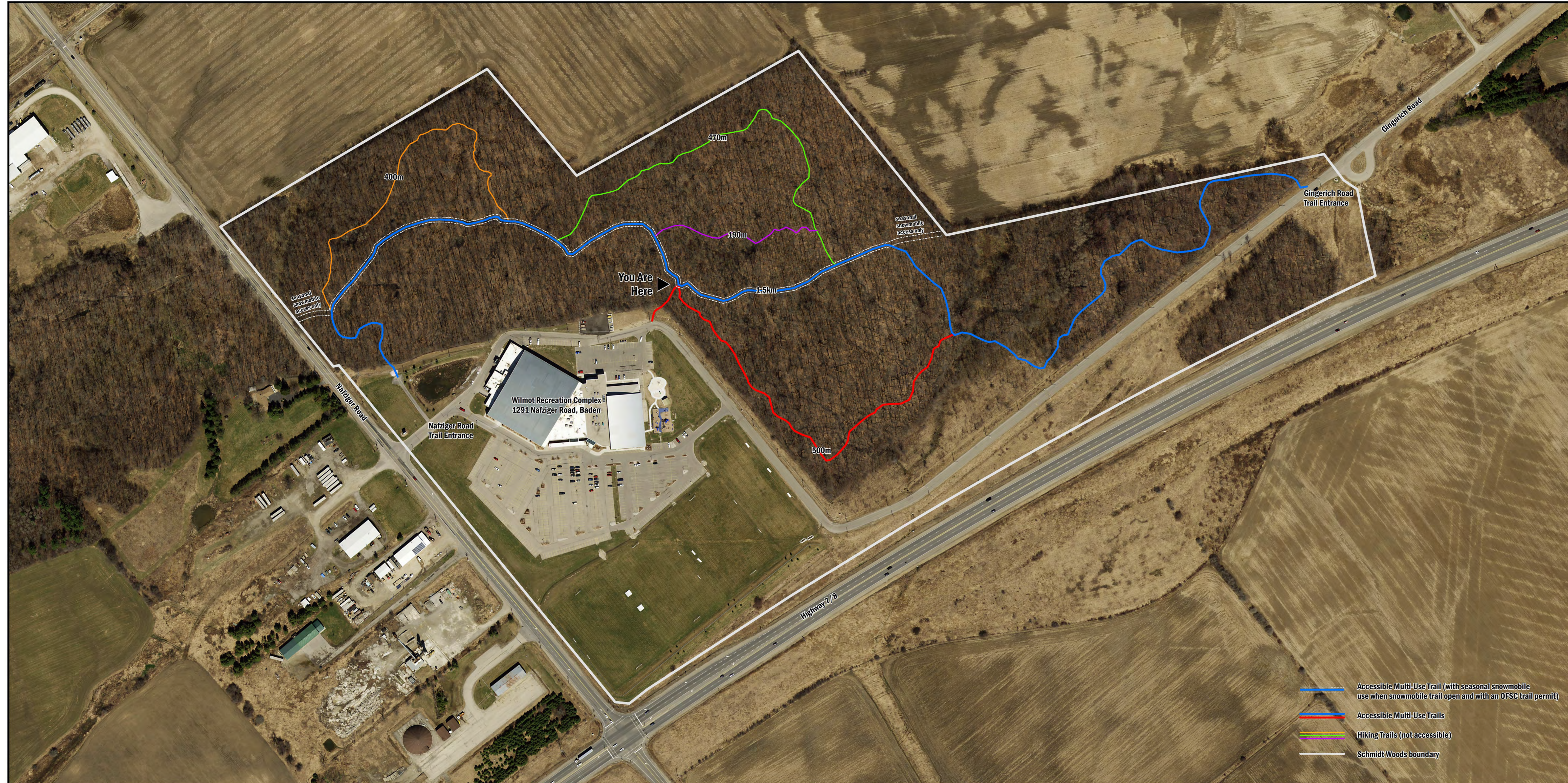
Trail Turns Left

## ENTER AT YOUR OWN RISK

Trail use is a potentially dangerous activity carrying a significant risk which could result in injury or property damage and should only be undertaken by an individual with the full understanding of all inherent risks. When entering the property of the Corporation of the Township of Wilmot and using any of the Township of Wilmot's lands, including the designated trails, for any purpose whatsoever, you assume the full and complete risk of any injury and/or damage to personal property which you may suffer or incur.

## QUESTIONS?

Please contact the Township of Wilmot Facilities and Recreation Services Department at 519.634.8444, [trails@wilmot.ca](mailto:trails@wilmot.ca) or visit our website: [wilmot.ca/trails](http://wilmot.ca/trails).



## IN AN EMERGENCY

In an EMERGENCY situation whenever police, fire, or ambulance assistance is required immediately, telephone 911. If you are unsure, call 911 and the communicator will help make a determination. When calling 911, report your location by stating you are on the SCHMIDT TRAILS at the WILMOT RECREATION COMPLEX, 1291 Nafziger Road, Baden and state the closest entrance point: NAFZIGER ROAD ENTRANCE or GINGERICH ROAD ENTRANCE.